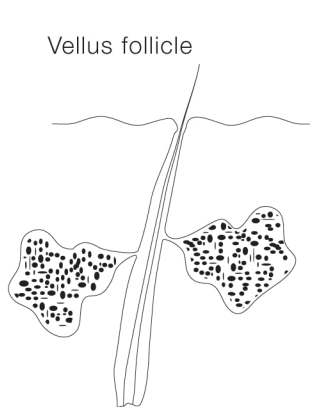
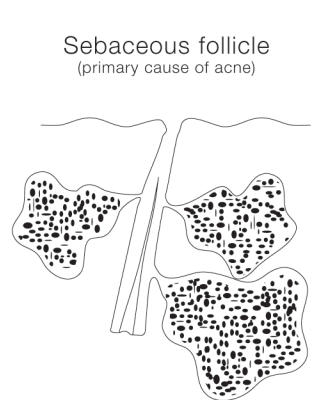


Beard follicle



Vellus follicle



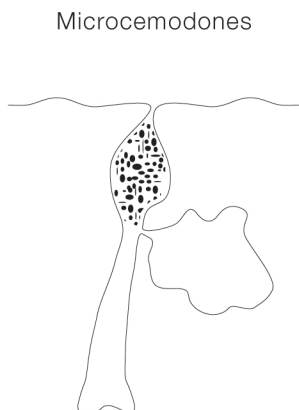
Sebaceous follicle
(primary cause of acne)

Humidity
Tropical climates with increased humidity or heat do cause a reduction in pore size. Follicular cell build up once pore size is reduced will cause comedone formation. This effect can also be seen after a prolonged shower or bath

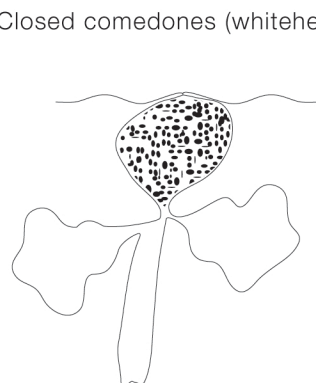
Papule
Raised bump with no visible liquid

Pustule
Small inflamed lesions often filled with puss.

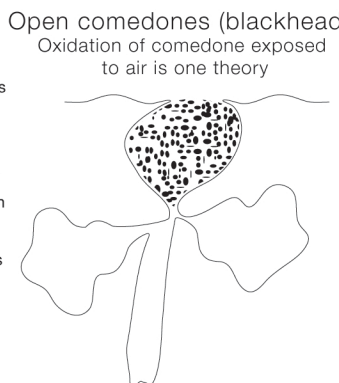
Macule
Flat markings, not raised, not flat.



Microcomedones



Closed comedones (whiteheads)



Open comedones (blackheads)
Oxidation of comedone exposed to air is one theory

Deep Inflammatory Lesions
(Nodules)
Small are 5 - 10 mm and larger up to 2 - 3 cm.
(Deep Pustules)
Softer nodules that may be 1 cm or more in size.

Macrocomedones (microcysts)
Are usually whiteheads but occasionally blackheads that are over 3 mm in diameter.

Misc comedones (Sandpaper)
Closely packed whiteheads

(Submarine)
Large 5 - 8 mm comedones